

Standard Range VRLA

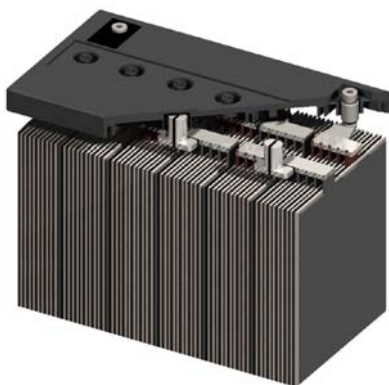
EverExceed®
power your applications

Long Duration and High Performance


For Telecommunication
/ Electric Utility Applications



ST-6230 VALVE REGULATED LEAD ACID BATTERY FOR TELECOM / ELECTRIC UTILITY APPLICATIONS 6V 230 AH @ 10 HR RATE 6V 264 AH @ 20 HR RATE



FEATURES

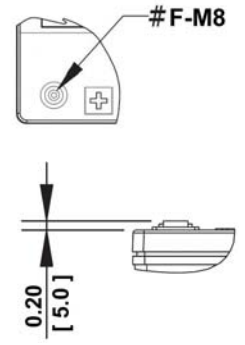
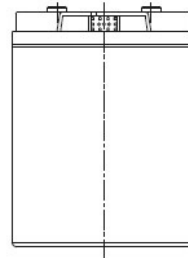
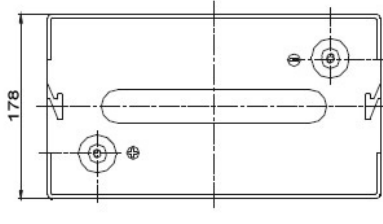
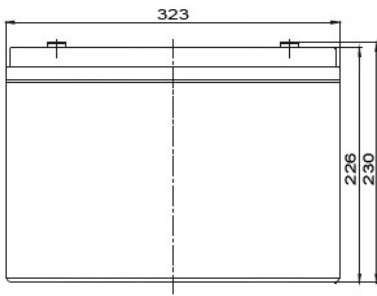
- 📦 Thick positive plate design for maximum service float life - 10 year design life @ 25°C(77°F).
- 📦  UL Recognized component .
- 📦 Valve regulated lead acid battery (VRLA).
- 📦 High-Compression Absorbed Glass Mat technology (AGM) for greater than 99% recombination efficiency.
- 📦 Operates at a low internal pressure.
- 📦 Heavy duty insert copper alloy terminals for ease of assembly, reduced maintenance and increased safety.
- 📦 Advanced lead tin calcium alloy, reduces grid corrosion and promotes long battery life.
- 📦 **Standard:** Reinforced ABS (UL 94HB) container and cover
Optional: Flame-retardant reinforced ABS container and cover compliant with U.L.94 V-0 with an Oxygen limiting Index of greater than 28%.
- 📦 Over-sized, through the partition inter-cell welds provide low resistance connections, with minimal power loss.
- 📦 Flame arresting, low pressure safety release venting system for individual cells, recognized per U.L. 924.
- 📦 Multicell design for ease of installation and maintenance.
- 📦 Horizontal or vertical operation.

6 VOLTS - 230 AMPERE HOUR @ 10 HOUR RATE

AH Capacity to 1.80VPC @ 77°F (25°C)

End Point Volts/Cell	1.5hr	2hr	3hr	4hr	5hr	8hr	10hr	12hr	20hr
1.80	166	177	187	196	204	221	230	235	255

ST-6230



ST-6230 – Specifications

Cells Per Unit	Voltage Per Unit	Weight	Electrolyte	CCA at -18°C (0°F)	Short Circuit Current	Ohms Imped 60 Hz (Ω)
3	6.42	73.9 lbs 33.5 kg	Absorbed H ₂ SO ₄ SG = 1.300	1400 Amps	5600 Amps	0.0015

Capacity	264 Ah @ 20 hr. rate to 1.75 volts per cell @ 77°F (25°C). 230 Ah @ 10 hr. rate to 1.80 volts per cell @ 25°C (77°F).
Applicable Operating Temperature Range	-40°F (-40°C) to +140°F (60°C).
Ideal Operating Temperature Range	+68°F (+20°C) to +77°F (25°C).
Floating Charging Voltage	13.5 to 13.8 VDC/unit Average at 77°F (25°C).
Recommended Maximum Charging Current Limit	0.25C20 amperes (66 amperes @ 100% depth of discharge) @ 20 hr. rate.
Equalization and Cycle Service Charging Voltage	7.2 to 7.4 VDC/unit Average at 77°F (25°C).
Maximum AC Ripple (Charger)	0.5% RMS or 1.5% P-P of float charge voltage recommended for best results. Maximum voltage allowed = 1.4% RMS (4% P-P). Maximum current allowed = 13.2 amperes RMS (C/20).
Self Discharge	EverExceed Standard Range batteries may be stored for up to 6 months at 77°F (25°C) and then a freshening charge is required. For higher temperatures the time interval will be shorter.
Accessories	Inter unit connectors racks and cabinet systems are available.
Terminal: Inserted	Threaded copper alloy insert terminal
Terminal Hardware Initial Torque: Inserted Terminal	11 N-m

Constant Power Discharge Ratings – Watts Per Cell @ 77°F (25°C)

End Point Volts/Cell	Operating Time to End Point Voltage (in hour)									
	1.5	2	3	4	5	8	10	12	20	24
1.85	199	164	116	91.5	76.1	52.5	43.8	37.9	24.9	20.5
1.80	213	168	121	95.8	79.8	54.7	45.5	38.9	25.5	21.6
1.75	220	174	123	97.7	81.4	55.6	46.4	39.6	26.1	22.0

Constant Current Discharge Ratings – Amperes @ 77°F (25°C)

End Point Volts/Cell	Operating Time to End Point Voltage (in hour)									
	1.5	2	3	4	5	8	10	12	20	24
1.85	104	83.0	59.0	46.4	38.5	26.7	22.0	18.6	12.3	10.1
1.80	111	88.3	62.8	49.1	40.9	27.7	23.0	19.6	12.9	10.8
1.75	113	90.1	64.1	50.4	41.5	28.3	23.7	20.2	13.2	11.1

Note: Batteries to be mounted with 0.5 in (1.25 cm) spacing minimum and free air ventilation. Specifications subject to change without notification.