

Standard Range VRLA

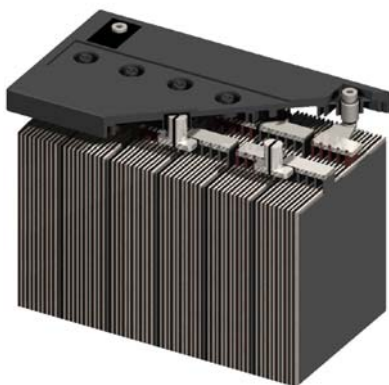
EverExceed®
power your applications

Long Duration and High Performance


For Telecommunication
/ Electric Utility Applications



ST-1280 VALVE REGULATED LEAD ACID BATTERY FOR TELECOM / ELECTRIC UTILITY APPLICATIONS 12V 80 AH @ 10 HR RATE 12V 91.2 AH @ 20 HR RATE



FEATURES

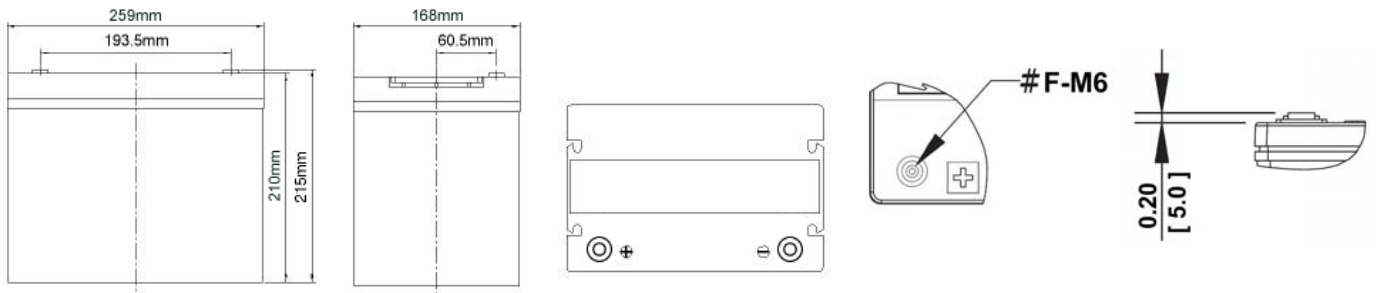
- ☑ Thick positive plate design for maximum service float life - 10 year design life @ 25°C(77°F).
- ☑  UL Recognized component .
- ☑ Valve regulated lead acid battery (VRLA).
- ☑ High-Compression Absorbed Glass Mat technology (AGM) for greater than 99% recombination efficiency.
- ☑ Operates at a low internal pressure.
- ☑ Heavy duty insert copper alloy terminals for ease of assembly, reduced maintenance and increased safety.
- ☑ Advanced lead tin calcium alloy, reduces grid corrosion and promotes long battery life.
- ☑ **Standard:** Reinforced ABS (UL 94HB) container and cover
Optional: Flame-retardant reinforced ABS container and cover compliant with U.L.94 V-0 with an Oxygen limiting Index of greater than 28%.
- ☑ Over-sized, through the partition inter-cell welds provide low resistance connections, with minimal power loss.
- ☑ Flame arresting, low pressure safety release venting system for individual cells, recognized per U.L. 924.
- ☑ Multicell design for ease of installation and maintenance.
- ☑ Horizontal or vertical operation.

12 VOLTS - 80 AMPERE HOUR @ 10 HOUR RATE

AH Capacity to 1.80VPC @ 77°F (25°C)

End Point Volts/Cell	1.5hr	2hr	3hr	4hr	5hr	8hr	10hr	12hr	20hr
1.80	56.8	60.9	65.0	68.0	70.7	76.9	80.0	81.5	88.7

ST-1280



ST-1280 – Specifications

Cells Per Unit	Voltage Per Unit	Weight	Electrolyte	CCA at -18°C (0°F)	Short Circuit Current	Ohms Imped 60 Hz (Ω)
6	12.84	52.3 lbs 23.7 kg	Absorbed H ₂ SO ₄ SG = 1.300	460 Amps	2400 Amps	0.0045

Capacity	91.2 Ah @ 20 hr. rate to 1.75 volts per cell @ 77°F (25°C). 80 Ah @ 10 hr. rate to 1.80 volts per cell @ 25°C (77°F).
Applicable Operating Temperature Range	-40°F (-40°C) to +140°F (60°C).
Ideal Operating Temperature Range	+68°F (+20°C) to +77°F (25°C).
Floating Charging Voltage	13.5 to 13.8 VDC/unit Average at 77°F (25°C).
Recommended Maximum Charging Current Limit	0.25C20 amperes (22.8 amperes @ 100% depth of discharge) @ 20 hr. rate.
Equalization and Cycle Service Charging Voltage	14.4 to 14.8 VDC/unit Average at 77°F (25°C).
Maximum AC Ripple (Charger)	0.5% RMS or 1.5% P-P of float charge voltage recommended for best results. Maximum voltage allowed = 1.4% RMS (4% P-P). Maximum current allowed = 4.56 amperes RMS (C/20).
Self Discharge	EverExceed Standard Range batteries may be stored for up to 6 months at 77°F (25°C) and then a freshening charge is required. For higher temperatures the time interval will be shorter.
Accessories	Inter unit connectors racks and cabinet systems are available.
Terminal: Inserted	Threaded copper alloy insert terminal
Terminal Hardware Initial Torque: Inserted Terminal	9 N-m

Constant Power Discharge Ratings – Watts Per Cell @ 77°F (25°C)

End Point Volts/Cell	Operating Time to End Point Voltage (in hour)									
	1.5	2	3	4	5	8	10	12	20	24
1.85	68.7	55.4	39.9	31.5	26.3	18.0	14.9	12.8	8.35	7.08
1.80	72.4	58.5	41.9	33.2	27.6	18.9	15.7	13.5	8.84	7.49
1.75	74.1	59.8	42.9	33.8	28.1	19.2	16.2	13.8	9.02	7.64

Constant Current Discharge Ratings – Amperes @ 77°F (25°C)

End Point Volts/Cell	Operating Time to End Point Voltage (in hour)									
	1.5	2	3	4	5	8	10	12	20	24
1.85	35.8	28.8	20.4	16.1	13.4	9.06	7.47	6.36	4.24	3.59
1.80	37.9	30.4	21.7	16.9	14.1	9.61	8.00	6.80	4.43	3.74
1.75	38.9	31.3	22.3	17.5	14.4	9.85	8.21	6.98	4.56	3.85

Note: Batteries to be mounted with 0.5 in (1.25 cm) spacing minimum and free air ventilation. Specifications subject to change without notification.